




Mobilizing Local Knowledge to Bridge Information Gaps in Climate Change Adaptation Planning


- Sue Nichols, UNB
- Titus Tienaah, UNB
- Don Forbes, NRCAN
- Michael Sutherland, University of West Indies



Coastal CURA Nichols May 2011

- What is C-Change (ICURA Project)?
- Why is Geographical Modelling Important in Coastal Climate Change Adaptation Planning?
- How Can Local Knowledge be Used to Supplement and Verify Scientific Information?




Coastal CURA Nichols May 2011



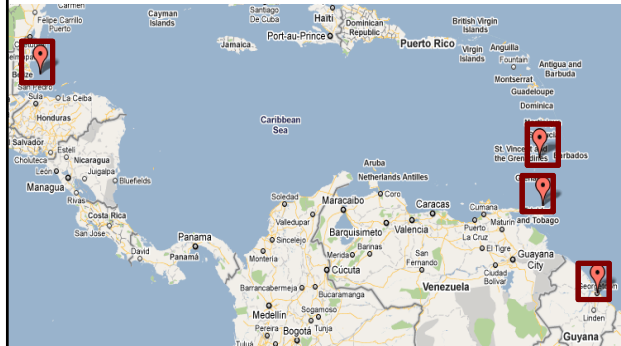

- ICURA: SSHRC and IDRC (2009-2013)
- Impacts of Sea Level Rise & Storm Surges
- 4 Canadian and 4 Caribbean Communities

Charlottetown / Isle Madame / Iqaluit / Gibson's Landing




Coastal CURA Nichols May 2011

Belize Barrier Reef / Grand Riviere, Trinidad / Georgetown / Island of Bequia

Coastal CURA Nichols May 2011

1
2
3
4
5

Threat Analysis


Vulnerability Analysis

Adaptation Design/Imp

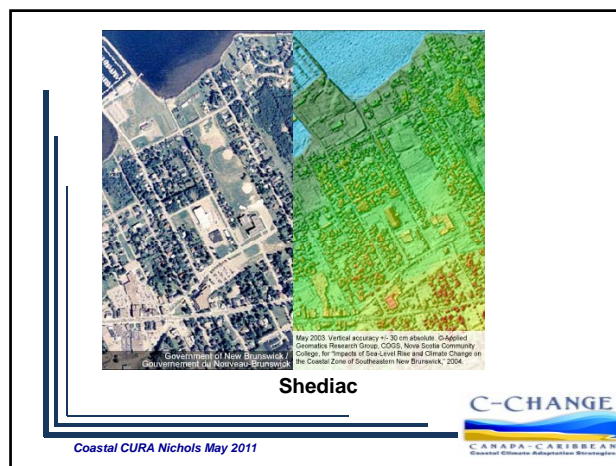
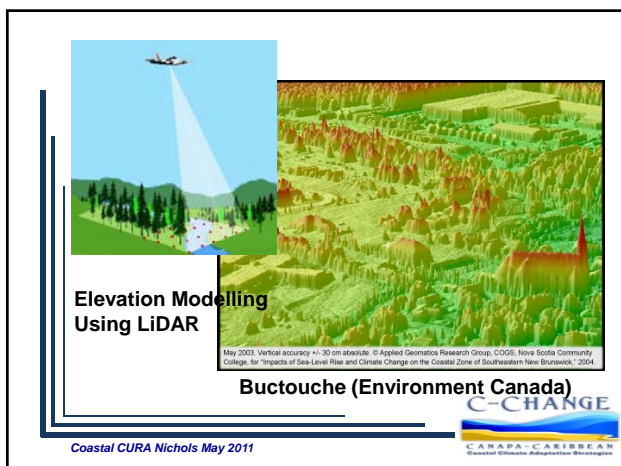
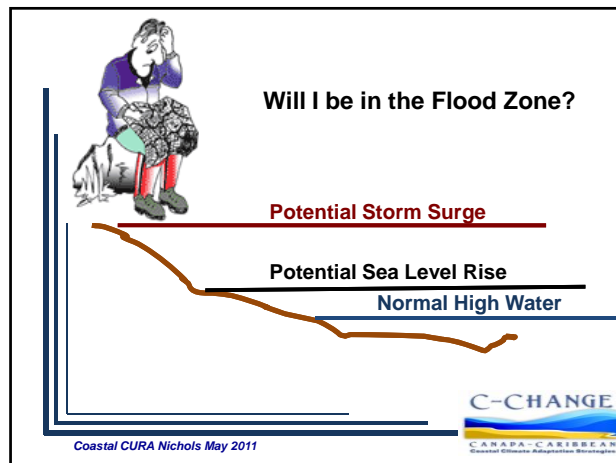
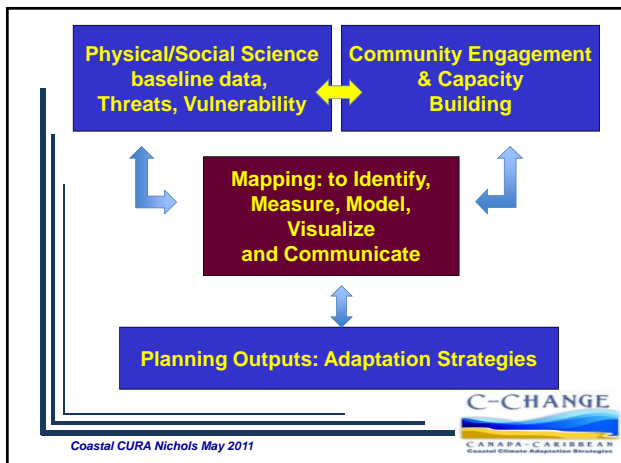
Community Engagement:
 Communication, Mobilization, Interchange, Lessons Sharing

Information Management:
 Collection, Assessment, Building Base Models

Capacity Building:
 Training, Community Interchange, Info Dissemination



Coastal CURA Nichols May 2011



- Examples of Scientific Data for Flood Modelling**
- Elevation Model for the Terrain
 - Sea Level Historical Records
 - Earth Subsidence or Rebound
 - Projected Sea Level Changes
 - Storm Surge (Oceanographic/Meteorological)
- Modelling**
- C-CHANGE**
CANAPA-CARIBBEAN
Coastal Climate Adaptation Strategies
- Coastal CURA Nichols May 2011


Coastal Collaborative GIS

C-CHANGE
CANAPA-CARIBBEAN
Coastal Climate Adaptation Strategies

Coastal CURA Nichols May 2011

Collaborative Coastal GIS (CCGIS)

- visualization tool:
 - e.g., Google Earth background
- managing user input (participatory)




CANAPA-CARIBBEAN Coastal Climate Adaptation Strategy

Coastal CURA Nichols May 2011

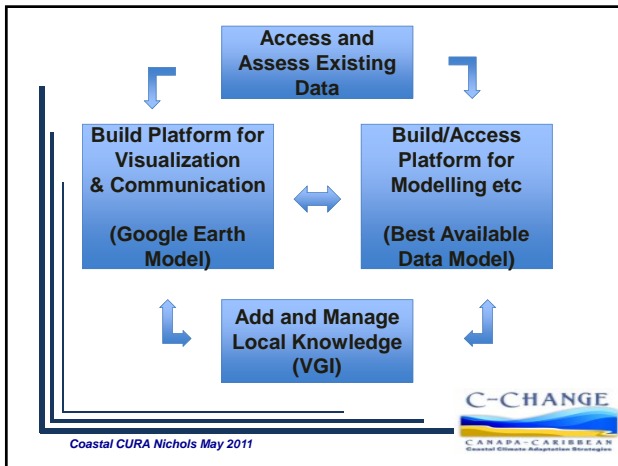
C-Change Principles for Building Geographic Modelling Tools

- use best available data
- low cost
- open source
- transferable / usable anywhere
- simple user interface/use




CANAPA-CARIBBEAN Coastal Climate Adaptation Strategy


Coastal CURA Nichols May 2011



Voluntary Geographic Information and Local Knowledge for Community Mapping



Every Citizen is a Sensor [Dangermond ESRI]




CANAPA-CARIBBEAN Coastal Climate Adaptation Strategy

Coastal CURA Nichols May 2011



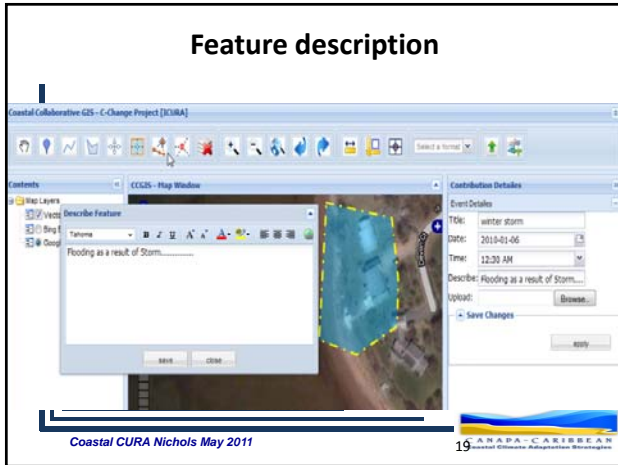
Mapping interface



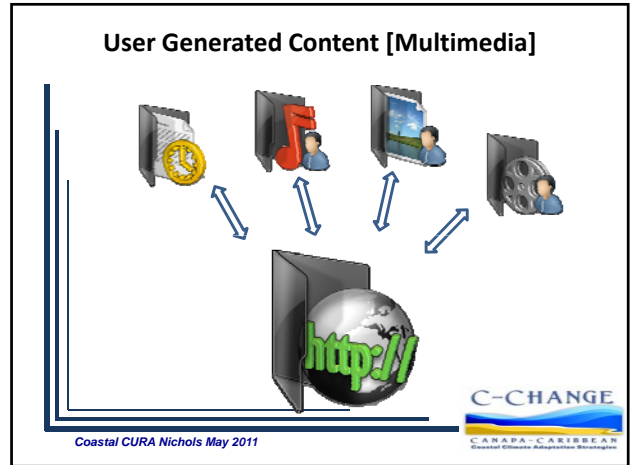
CANAPA-CARIBBEAN Coastal Climate Adaptation Strategy

Coastal CURA Nichols May 2011

Feature description



User Generated Content [Multimedia]



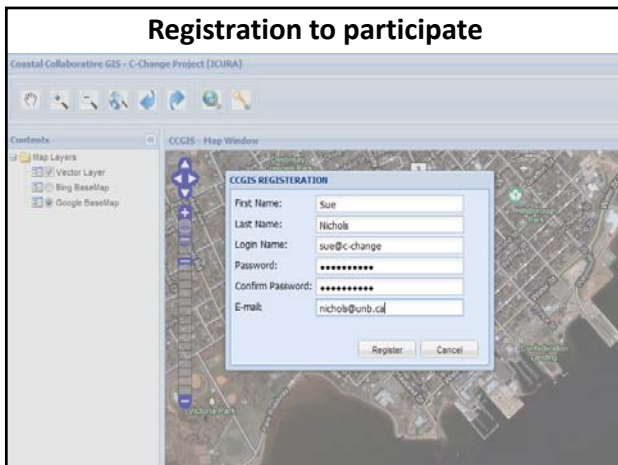
Local experience comments



Local experience comments: Real Time and Historical



Registration to participate



User Profile



Ongoing...

- Field Testing in Charlottetown and Isle Madame
- Refinement
- Transfer of Technology to Caribbean

Coastal CURA Nichols May 2011

