

MANGROVE EXPERIENCES



Josephine P. Savaris
Socio-economist
Zoological Society of London
Community Based Mangrove Rehabilitation Project

PRESENTATION FLOW

- Introductions (ZSL, CMRP)
- Part 1 - Governance in the Mangrove Eco-park
 - Profile of Katunggan It Ibajay (KII)
 - Basic definitions
 - Hierarchy of governance
 - Local Government Unit
 - Mangrove Eco Tourism Board
 - Project Management Council
 - People's Organization
 - Significant changes brought about by governance at varying levels
- Part 2 - Engaging with a School for complementation
 - Profile of Northern Iloilo Polytechnic State College (NIPSC)
 - How the engagement started?
 - Outputs

ZOOLOGICAL SOCIETY OF LONDON

- a NGO based in the United Kingdom

Mission

To achieve and promote the worldwide conservation of animals and their habitats

- Established in 1826
- Runs two animal visitor attractions – London Zoo and Whipsnade Wild Animal Park
- Opened the first Aquarium in the world in 1831
- Conducts field conservation work all over the world

COMMUNITY-BASED MANGROVE REHABILITATION PROJECT

◦ 4-years project, 2008 – 2012

◦ Project goals:

- To **secure tenure** on coastal land through Community-based Forest Management Agreements;
- To **rehabilitate abandoned, unutilized and underutilized (AUU) fishponds** back to healthy mangrove forest
- to **provide communities with ecosystem goods and services** including increased food resources;
- To support coastal communities to **supplement** their **livelihoods** utilising rehabilitated mangrove habitats;
- To **re-establish the legally mandated mangrove 'greenbelt'** along the coast, to decrease vulnerability of the communities to coastal erosion and storm surges

◦ Project strategies

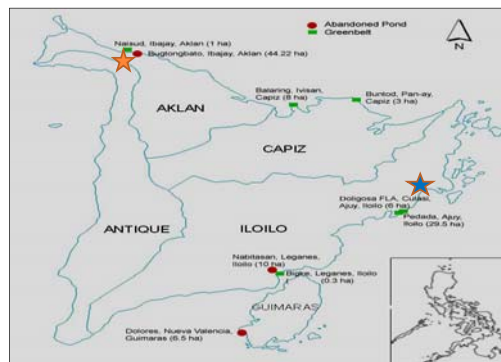
- Equal opportunities for men and women
- Active community participation
- Influencing opinion
- Capacity building
- Building alliances, collaboration and networking



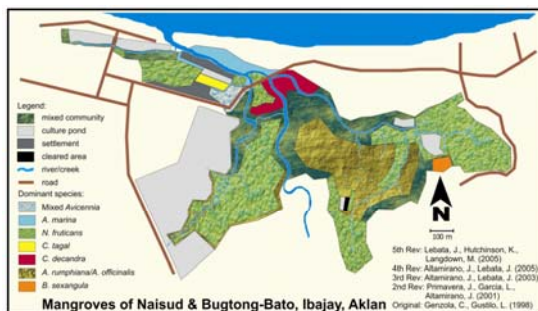
◦ Project partners

- Department of Agriculture-Bureau of Fisheries and Aquatic Resources (DA-BFAR)
- Department of Environment and Natural Resources (DENR)
- Local Government Units (LGUs)
- Peoples Organisations (POs)
- Fishpond Operators
- Academe

CMRP SITES

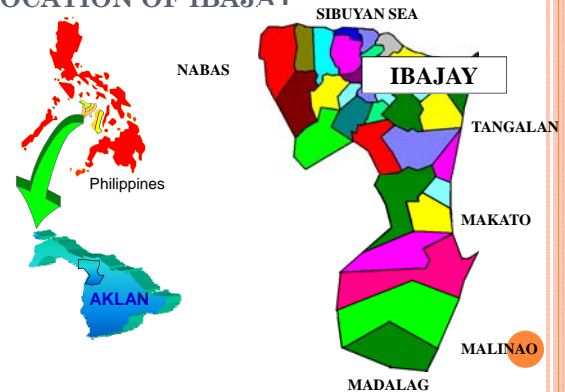


Governance in the Mangrove Eco-park



The mangrove community in Ibajay has a high level of biodiversity. A total of **27 species of mangroves** out of the **35 Philippine species** (equivalent to 77%) have been identified in the **44.22 ha timberland** of Naisud & Bugtongbato, Ibajay, Aklan. There are 776 HH living within the vicinity of the eco-park.

LOCATION OF IBAJAY

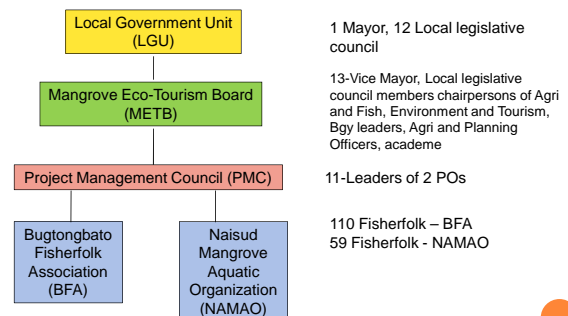


GOVERNANCE

- the **process of decision-making** and the **process by which decisions are implemented** (or not implemented).
- an analysis of governance focuses on the **formal and informal actors** involved in decision-making and implementing the decisions made and the **formal and informal structures that have been set in place** to arrive at and implement the decision.



GOVERNANCE STRUCTURE IN KII



ROLES AND RESPONSIBILITIES

LGU	<ul style="list-style-type: none"> - RA 8550 and RA7160 mandates LGU to protect their resources - Formulation and passage of the ordinance governing KII - Fund sourcing - Deputize the Forest Guards together with the Dept of Environment and Natural Resources (DENR)
METB	<ul style="list-style-type: none"> - Evolved from the Technical Working Group - Formulate policies and guidelines on the management, protection and utilization of mangroves - Monitoring and evaluation of the eco-park project - Supervision of the Peoples Organization (POs) in eco-park management - Approves the annual work plan of the PMC - Provides the over-all direction and coordination of activities in the mangroves for the 2 POs

ROLES AND RESPONSIBILITIES

PMC	<ul style="list-style-type: none"> - Direct management of mangroves and supervision of activities in the eco-park - Reports to the METB status of the project, finances, policy enforcement among others - Prepares and implements the annual work plan - Keeps record of activities including logbook of visitors/ guests to the park - Accounts for the income from the park
POs	<ul style="list-style-type: none"> - Implementation of the policies - Awardees of the 25-years Community based Forest Mgt Agreement (CBFMA) – execute activities as outlined in the Annual Work Plan of the CBFMA and reports to DENR - Governed by a set of rules defined in their Constitution and By- Laws - Performs daily activities in the eco-park (tour guides, caretaker, maintenance, forest guards) - Monitors effectiveness of policies passed

SIGNIFICANT CHANGES



- Passed Municipal Ordinance 092 series 2009- Declaring the 44.22 ha as Mangrove Eco-Park
- Indiscriminate cutting of mangroves and use of the resources within the mangrove area is controlled-local laws and the forest guards
- Awareness raised – policy makers, students, teachers, communities
- Learning destination (for people from the academe and the scientific community) and model for other LGUs to follow

- Tenurial instrument – CBFMA to be awarded to the POs to manage the 44.22 ha timberland in 25 years
- Communities slowly reaping the benefits – both POs share 80% of the total net income generated from the park
- Ibajay is becoming an alternative tour destination with the help of the Department of Tourism



ENGAGING WITH NIPSC FOR COMPLEMENTATION

- The Northern Iloilo Polytechnic State College is an academic institution. It has 1 main campus (Estancia, Iloilo) and 7 external campuses scattered all over the Province of Iloilo.
- One of the departments is the Department of Criminology where Community Immersion is required of the Police Interns, a 4 units subject with 285 hours of extension work needed to be able to complete and pass the course.
- The engagement of the ZSL CMRP project was with the Ajuy, Iloilo campus.

HOW THE ENGAGEMENT STARTED

- 2010 – ZSL CMRP proactively seek for partners for the planting activities to be done in the 120 ha targeted planting area; In Ajuy target enhancement planting area is 5 ha of the 29.5 ha mangrove greenbelt
- Project orientation was conducted to some 300 students of NIPSC in Ajuy in June 2010
- Initial discussions was done with some of the teaching staff
- Planting activities were then set with one professor for the Community Immersion class

TANGIBLE OUTPUTS

Outplanting – 200 hours/ student



Year	Number planted	Species	Number of students mobilized
2010 Pedada, Ajuy	6,061	<i>Avicennia marina</i> , <i>Sonneratia alba</i> , <i>Rhizophora mucronata</i>	121 NIPSC students
% of target	30% (from 20,022 target)		
2011 Nabitanan, Leganes	3,257	<i>Avicennia marina</i> , <i>Sonneratia alba</i>	46 NIPSC students
% of target	31% (from 10,519 target)		167 Total students mobilized

CRM data gathering in the 8 coastal villages of Ibayay
 - 8 NIPSC students trained on PCRA and given 140 hours each
 - Ibayay CRM Profile was developed by ZSL CMRP



Plaque of appreciation given to NIPSC by ZSL gave the school recognition with the Commission on Higher Education

MOA sealed between ZSL and NIPSC



Strategy was adopted in the other sites – 10 other schools were engaged by CMRP project

CHALLENGES

- Change in local political leaders – different interest
- Strength and functionality of the community-based groups

The problem of the ENVIRONMENT is HUGE, very CHALLENGING, however if we work TOGETHER we can help and MAKE a DIFFERENCE!



Maraming Salamat
 (Thank You)